

New anti-aging ingredient extracted from flowers of *Camellia japonica*.

- **CAMELLIA FLOWER EXTRACT BG** is obtained by extracting with 50% 1,3-Butylene glycol from *Camellia japonica* flower. It is useful as the beautification and anti-aging natural ingredient.
- *Camellia japonica* is popular as a garden plant with beautiful flowers in Japan. Flower of *Camellia japonica* is also known as a symbol of eternal beauty, therefore the extract from the flower upgrades the cosmetics.



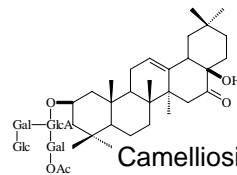
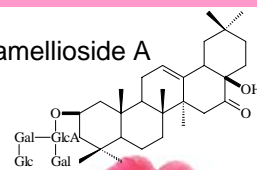
1 Product Features

- **CAMELLIA FLOWER EXTRACT BG** contains four novel triterpene glycosides, Camellioside A, B, C and D.

CAMELLIA FLOWER EXTRACT BG has an excellent antioxidative activity, so anti-aging effect can be expected to be generated. Furthermore, the flower extract of *Camellia japonica* is reported to show the inhibitory effect of absorption of glucose and ethanol, protection of gastric mucosa by ethanol.

- **CAMELLIA FLOWER EXTRACT BG** is a new natural anti-ageing ingredient extracted from flowers of *Camellia japonica* in Goto islands, Nagasaki, Japan.

Camellioside A



Camellioside B

2 Information / Composition / Specification

● COMPOSITION

INCI Name	CAS No.	Content
CAMELLIA JAPONICA FLOWER EXTRACT	223748-13-8	1.0 %
BUTYLENE GLYCOL	107-88-0	49.5 %
WATER	7732-18-5	49.5 %

● SAFETY DATA

1. Acute oral toxicity
2. Primary skin irritation
3. Ocular irritation
4. Skin sensitization
5. Phototoxicity
6. Photosensitization
7. Cumulative application
8. Reverse mutation (Ames)
9. Human patch

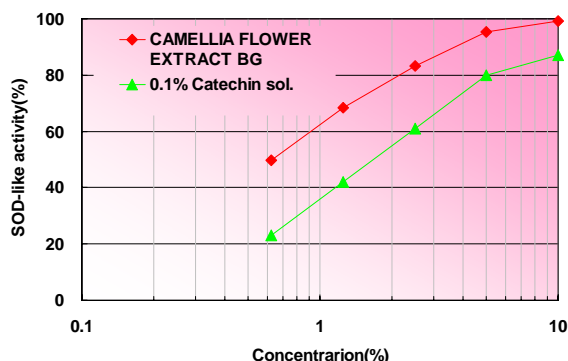
- **PACKAGING:** 1kg, 10kg

● SPECIFICATION

Test Item	Specification
Appearance/Odor	Light brown to brown liquid. Characteristic odor.
Identification (1)	A blue to deep purple color develops.
Identification (2)	A light orange to red color develops.
Refractive Index	1.380 -1.410
pH Determination	3.5 - 6.0
Specific Gravity	1.010 - 1.040
Heavy Metals Limit Test	Max. 20ppm
Arsenic Limit Test	Max. 2ppm
Norvolatile Residue	0.5~1.5%
Residue on Ignition	Max. 1.0%

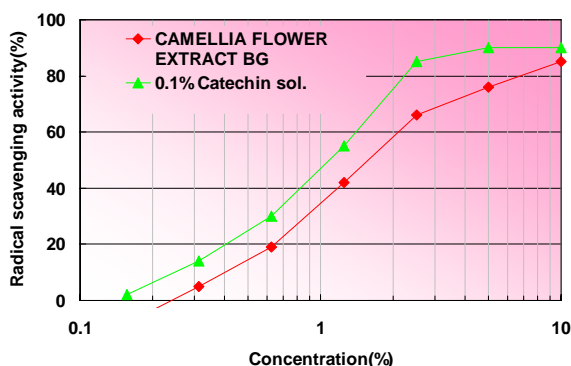
3 Functionality

1) SOD-like activity



CAMELLIA FLOWER EXTRACT BG exhibited a SOD-like antioxidative activity.

2) DPPH radical scavenging activity



CAMELLIA FLOWER EXTRACT BG showed a good radical scavenging activity.