

EUCALYPTUS EXTRACT ET

(Skincare & Haircare)

Multifunctional extract obtained from baby Eucalyptus leaves.

- EUCALYPTUS EXTRACT ET is obtained by extracting with 50% ethanol solution from leaves of *Eucalyptus globulus*.
- The leaves are steam distilled to extract eucalyptus oil. The oil has therapeutic, perfumery, flavoring, antimicrobial and biopesticide properties, so using as a therapy of rheumatoid arthritis, neuralgia and dermatoses. Furthermore, in China, eucalyptus leaves are used for a therapy of cold, influenza, diarrhea, enteritis, arthrosis, cystitis, burn and eczema.



1 Product Features

- **Tight junction (TJ) formation promoter**
EUCALYPTUS EXTRACT ET has the most TJ formation promoter in the extracts of 150 plants. The promotion of TJ formation can induce the skin barrier function.
- **Various useful functions**
Skin-whitening, Hair-growth promoting, Anti-ageing (inhibitor of AGE formation, estrogen-like activity, anti-oxidative), Anti-inflammation, Anti-bacterial activity.



2 Information / Composition / Specification

● COMPOSITION

INCI name	CAS No.	Content
EUCALYPTUS GLOBULUS LEAF EXTRACT	84625-32-1	1.6 %
ALCOHOL	64-17-5	49.2 %
WATER	7732-18-5	49.2 %

● SPECIFICATION

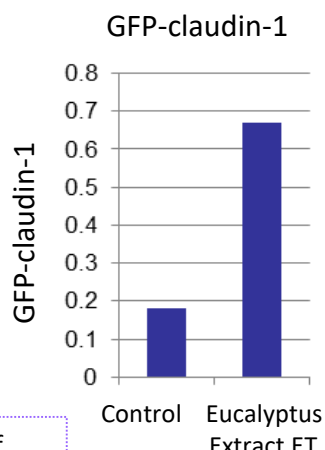
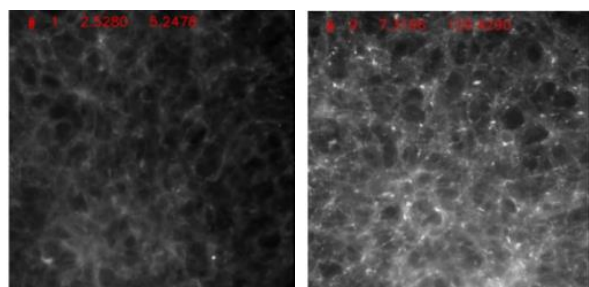
Item	Specification
Appearance/Odor	Light brown to brown liquid. Faint characteristic odor.
Identification (1)	A light red to red color develops.
Identification (2)	A dark blue to dark green-brown color develops.
pH	4.3~5.5
Heavy metals	Max. 20ppm
Arsenic	Max. 2ppm
Residue on Evaporation	1.4 - 2.0 %

● PACKAGING : 1kg

3 Experimental Data

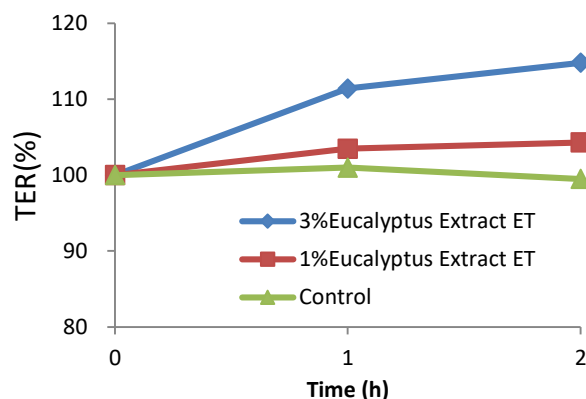
Tight junction formation promoter

Polymerization of GFP-Claudin-1 in GFPmCL1L cells



Eucalyptus Extract ET induced the polymerization of GFP-claudin-1 in GFPmCL1L cells in 5 hours.
Eucalyptus Extract ET can promote the TJ formation.

Transepidermal electrical resistance(TER)



Eucalyptus Extract ET increased the TER value in an hour.